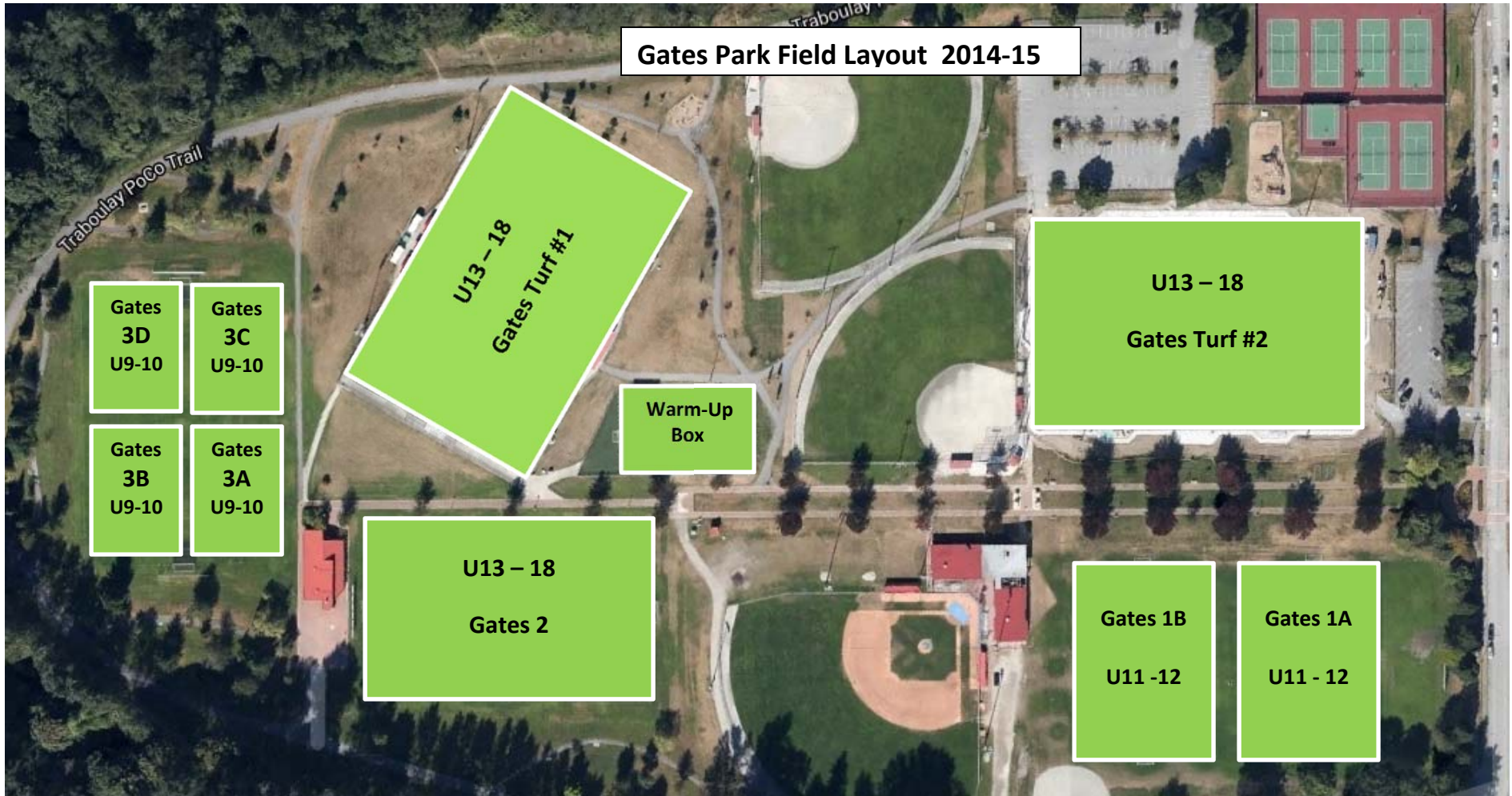


## Gates Park Field Layout 2014-15



### All Fields:

The Open/Closed Status is updated daily on the City Field Status [webpage](#)

No practicing or warming up on grass fields outside of the 30 minutes prior to the scheduled game. Please use/share the Warm-Up Box.

Do **not** warm-up in the goal areas on grass fields, except for the goal keeper.

**Gates Turf #1 & Turf #2** - only players, coaches, and referees on synthetic turf fields.

**Gates 1A/B** – the player area is located between the two fields, all spectators must be on the opposite sides of the player area.

**Gates 3A/B/C/D** – both the player area and spectator is located on the outside of the fields. No one except the volunteer linesman is to be located between fields.